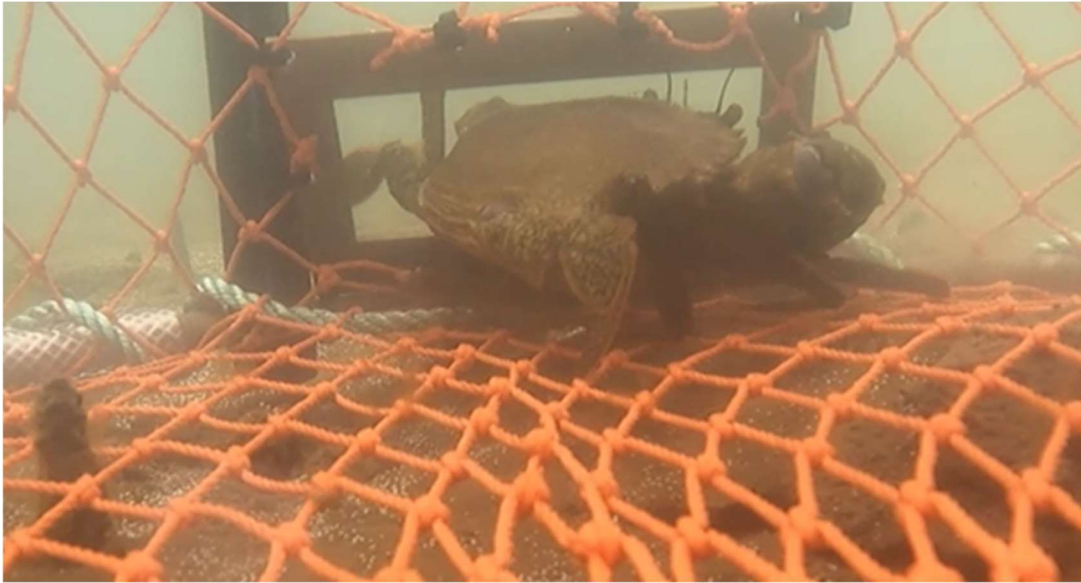


Mud Crab Fishery Escape Vents



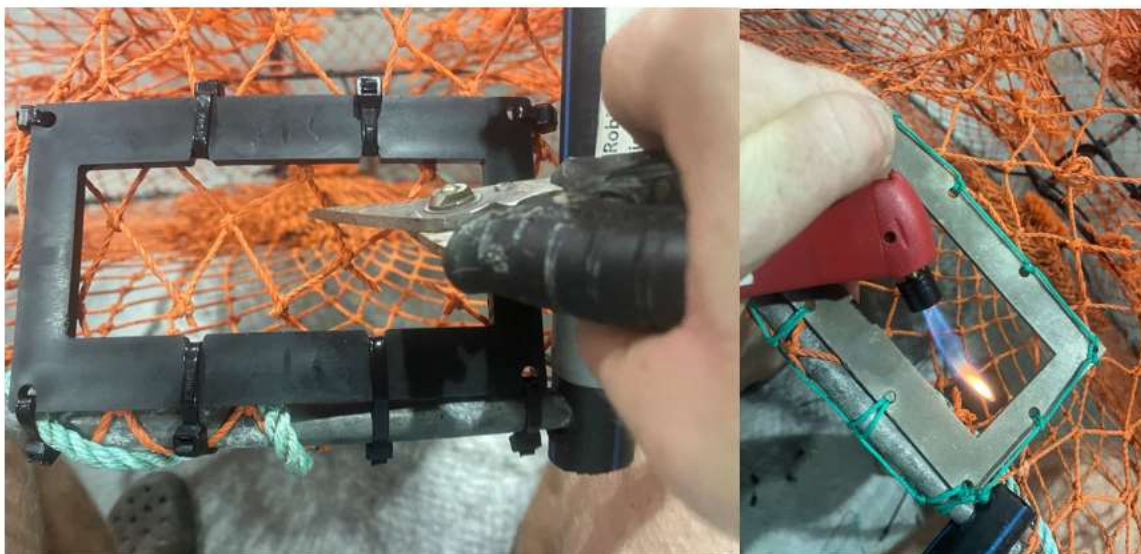
Escape Vents in crab pots enable the release of sublegal size crab and fish bycatch before retrieval. Less undersize crabs in pots makes it easier to sort your catch and reduces the risk of crabs damaging each other when pots are crowded.

120mm x 50mm Escape Vent Installation

1. Vents can be cable tied or bound with twine into pots. The 120 x 50 mm aluminium vents are predrilled with 10 attachment holes which will take a ziptie up to **3.2mm** (width). The plastic vents come with 4 holes and 4 slots for attachment.
2. Select a location to install. We find that in 900 mm, 4 funnel pots the bottom or top ring adjacent to an upright is good choice as the vent will sit flat and installation won't effect the tightness of the funnels. Make sure your pot is set up (all 4 legs) before installing.
3. Dryfit the escape vent in the selected location to ensure sits nicely (meshes maintain their natural shape). Fitting is easiest if you start attaching on the ring of the crabpot, then work around the meshes ensuring a tight fit.



4. Once firmly bound or cable tied into place, trim the tag ends and cut out meshes behind the vent making sure to heat treat (sing) the cut ends to prevent the mesh unravelling. If you have one, a heatknife is handy for this part of the process.



Congratulations! Your vents have been installed. One vent per pot is good but two vents per pot is great.

FAQs

What size crabs will these 120mm x 50mm vents let out?

- In rectangular vents, height is the variable which controls the size of crab which can escape. Of roughly 8000 crabs measured across QLD, no legal male mud crab has a body height or claw height that would allow it to exit through this size vent. Most sub-legal mud crabs with a carapace width of 135mm and below will be able to exit pots via this size escape vent.

Will these vents exclude all of undersize crabs from my pots?

- Undersize crab will still enter your pots however in research trials to date have less small mud crab in pots fitted with escape vents. By attaching your float line on the bottom ring directly opposite the vent location, small crabs remaining in the pot at time of retrieval often fall out while pulling them in.

I use my pots for mud crabbing and sand crabbing, will sandcrabs get out of this size vent?

- Yes, if you want to chase sandcrab in pots with vents installed simply put a ziptie or two across the center of the vent.

Will attaching a aluminium vent to the galvanised ring of my crabpot cause issues?

- If you have concerns about electrolosis attach vent in a location where it will not be in constant contact with a galvanised ring.

State of Queensland, 2020.



For more information on this licence, visit creativecommons.org/licenses/by/4.0.