

**TWO NEW SPECIES OF DACINAE (DIPTERA: TRYPETIDAE)
FROM NEW GUINEA**

By R. A. I. DREW*

[Manuscript received June 13, 1968]

Abstract

Two new species, *Strumeta brevistriata* and *Strumeta nigella* are described and figured.

***Strumeta brevistriata* sp.n. (Fig. 1)**

Types: NEW GUINEA: *Holotype* male, 2 male *paratypes*, ex lure trap charged with 1-p-h at Wau, April, 1965. Collected by Dr. E. N. Marks.

Holotype (Reg. No. T.6611) in Queensland Museum; 1 *paratype* in British Museum (Natural History); 1 *paratype* in Department of Primary Industries, Brisbane, Queensland.

A medium sized species, facial spots absent or very faint and small, thorax black with narrow mesopleural stripes and lateral post-sutural vittae, costal cells colourless, narrow costal band and an anal streak, legs fulvous, abdomen fulvous with a very narrow medial abdominal stripe on fifth tergite. Chaetotaxy as for genus *Strumeta*.

Male.—

Length: *holotype* 6.8 mm, range for type series 5.9 to 6.8 mm; wing: *holotype* 6.3 mm, range for type series 6.1 to 6.3 mm.

Head.—Generally fulvous. Vertical length: *holotype* 1.5 mm, range for type series 1.45 to 1.53 mm. *Frons* of even width; length 1.5 times breadth; fulvous with fuscous markings at bases of orbital bristles; bristles black: 1 *s.or.*, 2 *i.or.*; ocellar triangle black; antero-medial hump with fuscous markings and covered with short dark setae; lunule fulvous except fuscous lateral to antennae. *Face*, length 0.45 mm; spots lacking, except very pale and small in one *paratype*; colour fulvous; *Genae* fulvous; small, brown sub-ocular spots present; bristle black. *Occiput* fulvous, with yellow along eye margin; occipital row with 4 to 6 strong black bristles each side. *Antennae* fulvous, with fuscous on apex and outer surface of third segment; arista fulvous proximally (remainder black); length of segments: 0.2 mm; 0.33 mm; 0.78 mm.

Thorax.—Black with brown along transverse suture of mesonotum, below and behind humeral callus and around *p.sa.* bristles. Yellow markings as follows: humeral calli; notopleural calli; mesopleural stripes $1\frac{1}{2}$ times the width of the notopleural callus above and continuing on to sternopleuron below as a transverse spot; upper hypopleural callus (posterior apex black); $\frac{2}{3}$ lower hypopleural callus (remainder, including ventral margin, black); two lateral post-sutural vittae of medium width and narrowing posteriorly to end well before upper *p.sa.* bristle. *Postnotum* black. *Scutellum* yellow, except for narrow black basal band. *Bristles*: *sc.* 2, *prsc.* 2, *p.sa.* 2, *a.sa.* 1, *mpl.* 1, *npl.* 2, *scp.* 4; all bristles well developed and black except *sc.* bristles dark brown basally. *Legs* fulvous; middle tibiae each with an apical black spur. *Wings*: costal cells colourless, with microtrichia in outer portion of second costal cell only; remainder of wings colourless except narrow fuscous costal band bounded below by vein R_{2+3} and narrowing to end midway between veins R_{4+5} and M_{1+2} , and a wide fuscous anal streak ending along $Cu_1 + 1A$ before wing margin. A dense aggregation of microtrichia around extremity of vein $Cu_1 + 1A$. A weak supernumerary lobe. The second costal cell shorter than stigma in the proportion 0.66 : 1 in *holotype*. 0.66 : 1 to 0.71 : 1 range for type series. *r-m* dividing M_{1+2} above discoidal cell in the following proportions: *holotype* 1.65 : 1, range for type series 1.62 : 1 to 1.71 : 1. Proportion of anal cell extension to $Cu_1 + 1A$, 2.5 : 1.

Abdomen.—Oval; tergites free; fulvous pecten present on third abdominal tergite; first tergite fuscous, with posterior margin fulvous; second, third, fourth and fifth tergites light red-brown; a very narrow, median dark brown band on fifth tergite. A pair of shining spots on fifth tergite.

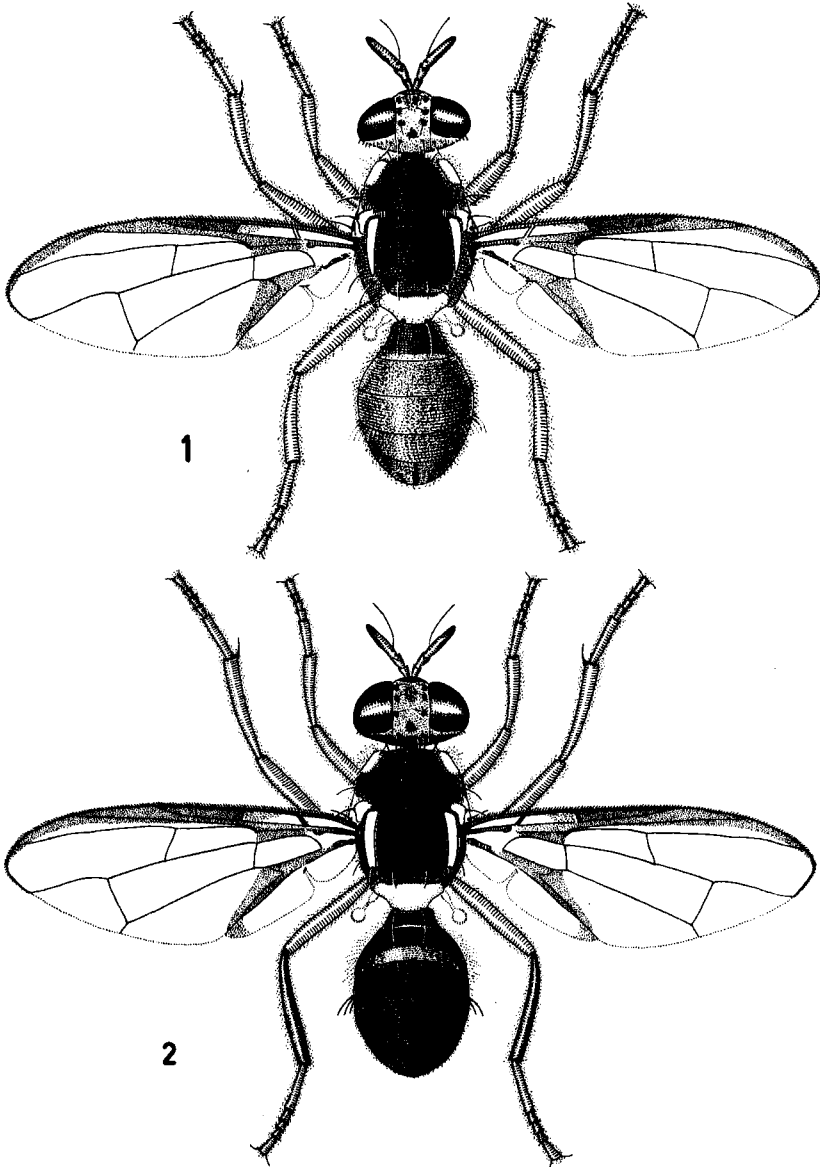
Comments

Strumeta brevistriata is similar to *Strumeta musae* (Tryon) and *Strumeta dorsalis* (Hendel) in general body colour, but the two latter species differ in the presence of distinct facial spots and in having hind tibiae dark brown. *S. musae* differs in possessing parallel sided post-sutural vittae which reach the upper *p.sa.*

*Entomology Laboratory, Department of Primary Industries, Indooroopilly, Queensland.

bristle, and in usually lacking a medial abdominal stripe. *S. dorsalis* differs in the presence of a distinct black medial abdominal stripe over the last three tergites and a black band along the anterior margin of third abdominal tergite.

Strumeta incertus (Malloch) and *Strumeta passiflorae* (Froggatt) resemble *S. brevistriata* in lacking facial spots. *S. incertus* differs in lacking post-sutural vittae, in having mesopleural stripe broad and reaching humeral callus above, thorax brownish-yellow, and possessing a medial abdominal stripe and a black band along anterior margin of third tergite. *S. passiflorae* differs in lacking post-sutural vittae, and in possessing black humeral calli and a black abdomen.



FIGS. 1, 2.—(1) *Strumeta brevistriata* sp.n. (x 7.5); (2) *Strumeta nigella* sp.n. (x 6.4).

***Strumeta nigella* sp.n. (Fig. 2)**

Types: NEW GUINEA: *Holotype* male, 2 male *paratypes*, ex lure trap charged with methyl eugenol at Wau, April, 1965. Collected by Dr. E. N. Marks.

Holotype (Reg. No. T. 6612) in the Queensland Museum; 1 *paratype* in British Museum (Natural History); 1 *paratype* in Department of Primary Industries, Brisbane, Queensland.

A medium sized species, generally black in colour, facial spots small, thorax black with lateral post-sutural vittae, narrow mesopleural stripe, wing with a narrow costal band and an anal streak, first costal cell colourless, second costal cell with fulvous colouration around margins, chaetotaxy as for genus *Strumeta*, abdomen black.

Male.—

Length 6.6 mm; wing 6.1 mm.

Head.—Generally fulvous. Vertical length 1.5 mm. *Frons* of even width; length 1.4 times breadth; dark fulvous in colour, with brown markings at bases of bristles; bristles black: 1 *s.or.*, 2 *i.or.*; brown coloured antero-medial hump, covered with small dark coloured setae; ocellar triangle black; lunule darkened. *Face* fulvous with small, black, triangular spots, not reaching epistoma; width of spot (0.09 mm) less than width of third antennal segment; length 0.53 mm. *Genae* fulvous; medium sized brown sub-ocular spots present; bristle black. *Occiput* fuscous, except for yellow band along eye margin; occipital row with 8 strong black bristles each side. *Antennae* fulvous, except for fuscous on the apex and outer surface of third segment; arista black except basal $\frac{1}{3}$ fulvous; length of segments: 0.23 mm; 0.28 mm; 0.83 mm.

Thorax.—Black, with a brown spot below the postero-ventral corner of humeral callus and dark brown lateral to post-sutural vittae. Yellow markings as follows: humeral callus (ventral margin dark brown and anterior margin brown); notopleural calli; narrow mesopleural stripe, slightly broader than notopleural callus above and continuing on to sternopleuron below as a small transverse spot; upper hypopleural callus (posterior apex black); $\frac{2}{3}$ lower hypopleural callus (remainder, including ventral margin, black); two lateral post-sutural vittae of medium width, narrowing slightly posteriorly and ending broadly at or slightly before the upper *p.sa.* bristle. *Postnotum* black. *Scutellum* yellow, except for narrow black basal band. *Bristles*: *sc.* 2, *prsc.* 2, *p.sa.* 2, *a.sa.* 1, *mpl.* 1, *npl.* 2, *scp.* 4; all bristles well developed and dark brown. *Legs*: coxae and trochanters fuscous, femora fulvous, fore tibiae fulvous and darkened basally, middle tibiae fulvous, hind tibiae dark brown, tarsi fulvous; middle tibiae each with an apical black spur. *Wings*: first costal cell colourless, second costal cell colourless with fulvous distally and along subcostal vein, microtrichia in outer portion of second costal cell only; remainder of wings colourless except narrow fuscous costal band extending below R_{2+3} and ending between extremities of R_{4+5} and M_{1+2} , a narrow fuscous anal streak ending midway along vein $Cu_1 + 1A$. A dense aggregation of microtrichia around extremity of vein $Cu_1 + 1A$. A weak supernumerary lobe. The second costal cell shorter than stigma in the proportion 0.7:1. *r-m* dividing M_{1+2} above discoidal cell in proportion of 1.4:1. Proportion of anal cell extension to $Cu_1 + 1A$, 2.0:1.

Abdomen.—Elongate-oval; tergites free; pecten present on third abdominal tergite; first tergite black with a narrow fulvous band medially along the posterior margin; second tergite black with a wide fulvous band along the posterior margin, but ending before the lateral margins; third, fourth and fifth tergites black; a pair of shining spots on fifth tergite.

Comments

There are many species of *Strumeta*, found in the South Pacific, that are generally black in colour. *S. perfuscus* (Aubertin) and *S. passiflorae* (Froggatt) differ from *S. nigella* in the absence of facial spots. *S. perfuscus* differs in possessing a black scutellum and in leg colouration. *S. passiflorae* differs in possessing black humeral calli, lacking post-sutural vittae and in leg colouration.

S. atra (Malloch), *S. carbonarius* Hendel and *S. kirki* (Froggatt) all differ from *S. nigella* in possessing a black scutellum. In addition, *S. atra* lacks a definite costal band and post-sutural vittae, *S. carbonarius* has brown humeral calli, and *S. kirki* lacks post-sutural vittae and differs in abdominal colouration.

S. atramentata Hering differs from *S. nigella* in colour of scutellum (yellow with black medial band) and in possessing black humeral calli. *S. lineata* Perkins differs in possessing short, narrow post-sutural vittae, black humeral calli and in leg and abdominal colouration. *S. exspoliata* Hering differs in lacking post-sutural vittae, and *S. obscurus* (Malloch) differs in abdominal colouration.

ACKNOWLEDGEMENT

Mr. W. W. Manley, Dept. of Primary Industries, Queensland, prepared the illustrations.